



Cultural Site Sheet

Cultural site name	Cassero Sale
Type of site	Historic building
Address	Piazza del Sale
City	Grosseto
Contacts	+39 0564 488573 IAT
Website	www.new.comune.grosseto.it/web/informazioni-turistiche-infopoint/
WCAG 2.1 compliant accessible website	YES

TESTED BY: [Handy Superabile Social Promotion Association](#) in summer 2024

Please note The following information refers to the date of verification shown at the bottom of each sheet. **The Association** is not responsible for any significant changes made by the property after the visit.

Summary

Cultural Site Sheet.....	1
Description.....	2
Arrival at the property.....	2
Private/public parking.....	2
Pathway from the car park to the entrance	3
Reception	4
Itineraries	4
Services	5
Additional elements.....	5
Toilets for guests with reduced mobility	6
Medical practices/healthcare facilities.....	6

Project carried out with the contribution of the



Presidenza del
Consiglio dei Ministri
Ministro per la disabilità



Description

The building was built in the mid-thirteenth century as a collection and distribution point for the salt that was extracted along the coast. The extraction of salt, which took place in spring and summer, was favored by the mild climate and the conformation of the coast; during the Middle Ages the production of salt assumed fundamental importance for the city, so much so that the Sienese managed to exercise control over this very profitable activity. The appearance of the building is due to numerous interventions that began in the sixteenth century when the Medici walls were placed against it.

General information

Opening and closing period	Open daily
Times	24 hours
Ticket cost	Free admission
Pet access	YES

Arrival at the property




Private/public parking

Presence of private parking	NO
Public parking nearby	YES
Type of flooring in the public car park	Asphalt and stabilized stone blocks
Presence of parking space reserved for people with disabilities	YES 1 for every 50 seats

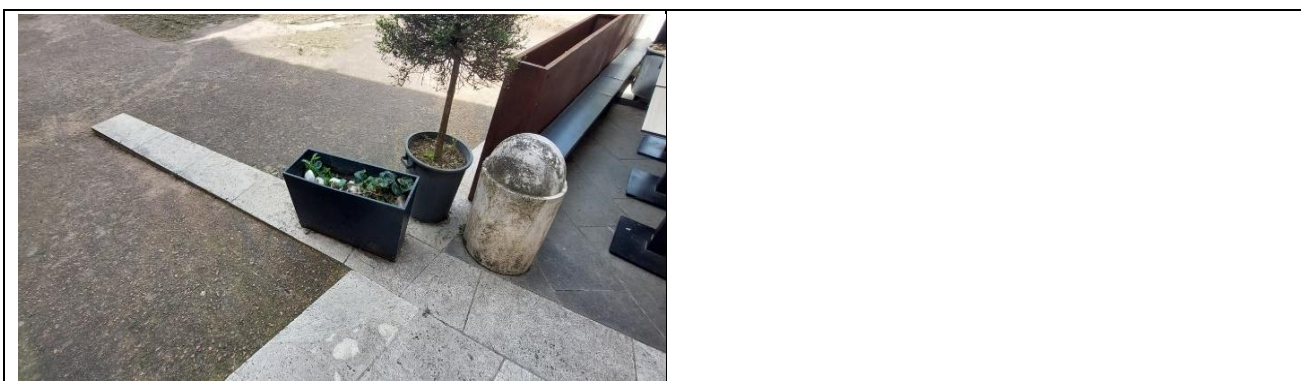




Pathway from the car park to the entrance

The property can be reached from the car park	flat
Distance from parking to entrance	From 20 to 150 meters
There are indicators and tactile maps	NO
There is an accessible entrance	YES main entrance
How to access the site	<input checked="" type="checkbox"/> via ramp Length 410 cm, width 200 cm slope 13% .
Usable width of external and internal door/entrance gate	Above 90 cm
	From the car park, go past the Porta Vecchia until you find Piazza del Sale immediately on the left
	





Reception

Eventual notes	Reception not present
----------------	-----------------------

Itineraries

Presence of maps	YES
Touch indicators and visual-touch maps	NO
Presence of didactic panels	YES
Audio guide	YES
Touch Models	NO
Multimedia workstations accessible from a seated position	NO
Routes dedicated to children	NO
Stopping points	YES
Route spread over several floors	NO
Access to the starting point of the route	flat
How to access the site	<input checked="" type="checkbox"/> via ramp length 410 cm, width 200 cm, slope 13%.
Usable width of door/entrance gate/corridor	Above 90 cm

Project promoted by



Regione Toscana



Services

Additional elements

Guided tours for groups	YES, by contacting guides licensed by the Tuscany Region (paid service)
-------------------------	---

Project carried out with the contribution of the



Presidenza del
Consiglio dei Ministri
Ministro per la disabilità



	https://www.regione.toscana.it/-/guide-turistiche-e-ambientali-accompagnatori-turistici-e-guide-alpine
Guided tours for individuals	YES, by contacting guides licensed by the Tuscany Region (paid service) https://www.regione.toscana.it/-/guide-turistiche-e-ambientali-accompagnatori-turistici-e-guide-alpine
Activities for children and families	NO
Accessible bookshop	Not detected

Toilets for guests with reduced mobility

Number of accessible toilets for guests with reduced mobility	Not detected
--	--------------

Medical practices/healthcare facilities

Hospitals near the property	Misericordia Grosseto Hospital Via Senese 161, phone +39 0564485111
Other healthcare facilities	Information point, toll-free number 8006133, open Monday to Friday from 8.00



Project promoted by



Regione Toscana

	<p>a.m. to 6.00 p.m., Saturday and Sunday from 9.00 a.m. to 1.00 p.m.</p> <p>Nephrology and Dialysis Unit c/o Grosseto Hospital telephone +39 0564 485159 email alberto.papi@uslsudest.toscana.it</p>
--	--

TESTED BY: [Handy Superabile Social Promotion Association](#) in 2024

Project carried out with the contribution of the



**Presidenza del
Consiglio dei Ministri**
Ministro per la disabilità